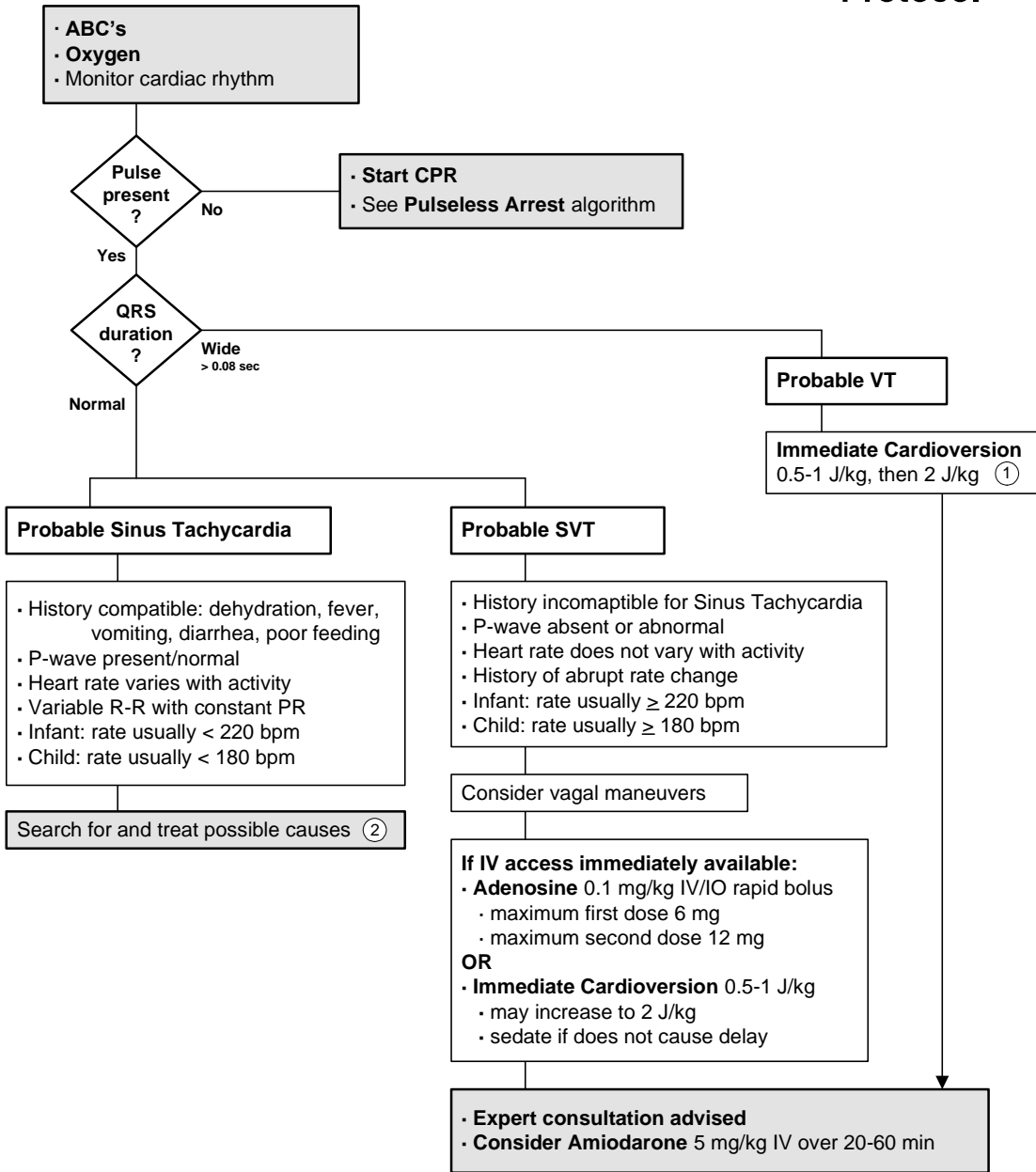


Tachycardia with poor perfusion
Pediatric Advanced Life Support

ALS
Protocol



1 Synchronized cardioversion: may use **Adenosine** and/or **sedation prior to cardioversion** yet these efforts should not delay cardioversion.

2 Search for causes: hypovolemia, hypoxia, acidosis, hypokalemia, hypoglycemia, hypothermia, toxins, cardiac tamponade, tension pneumothorax, PE, trauma.