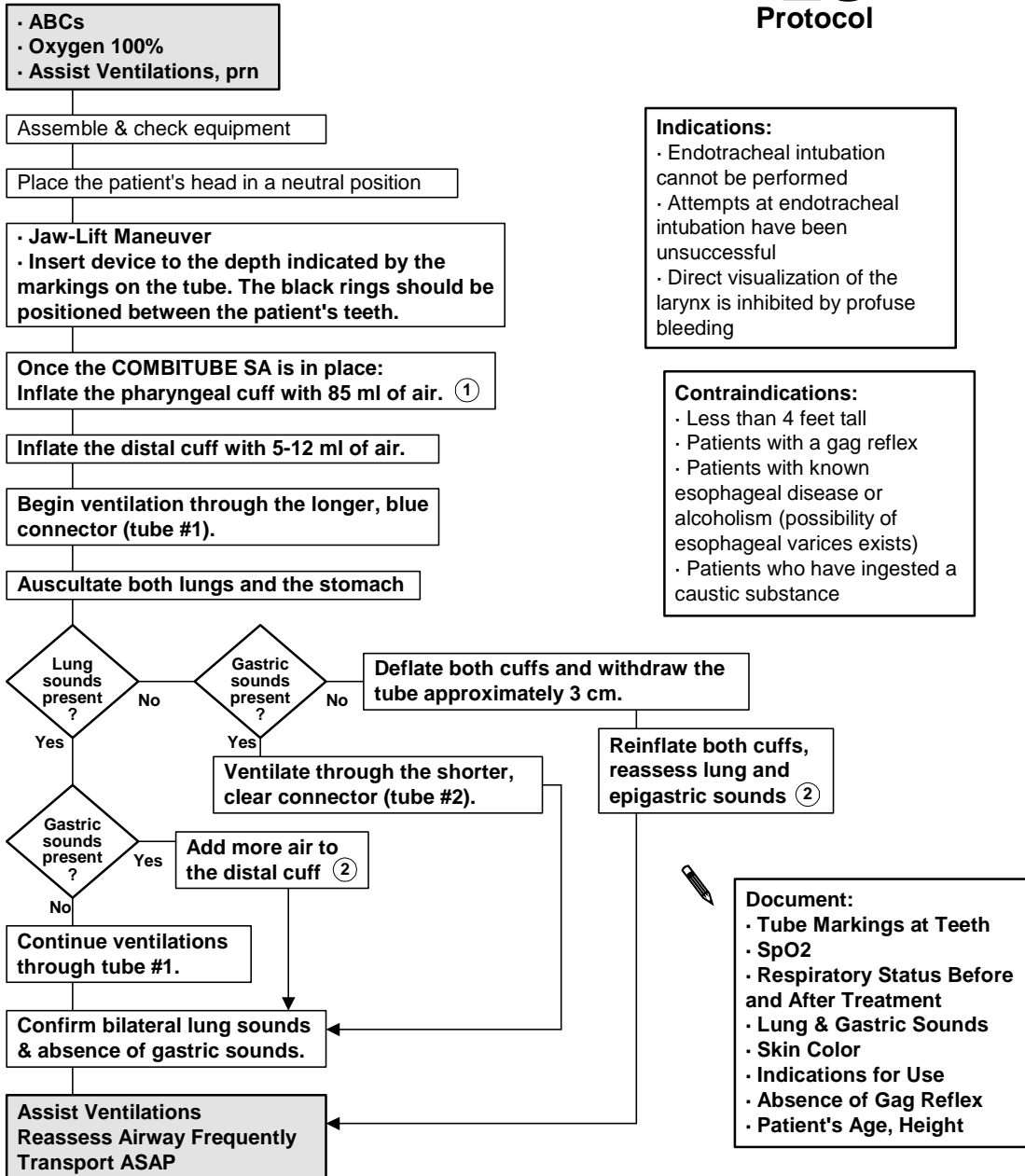


COMBITUBE SA Airway

ILS
Protocol



1 This seals the device in the posterior pharynx behind the hard palate. More air may be added to the pharyngeal cuff if an inadequate seal is detected during ventilation.

2 At NO time should the patient's airway or ventilatory status be compromised. If placement is unsuccessful, remove the device and return to oropharyngeal airway and assist via bag-valve-mask.

NOTE: This protocol is ONLY to be used with the Combitube SA and does NOT apply to the STANDARD Combitube.

ECEMS

Effective 1/2003 (Revised)

©2001-2006 Copyrighted East Cascade Emergency Medical Services Council

COMBITUBE SA