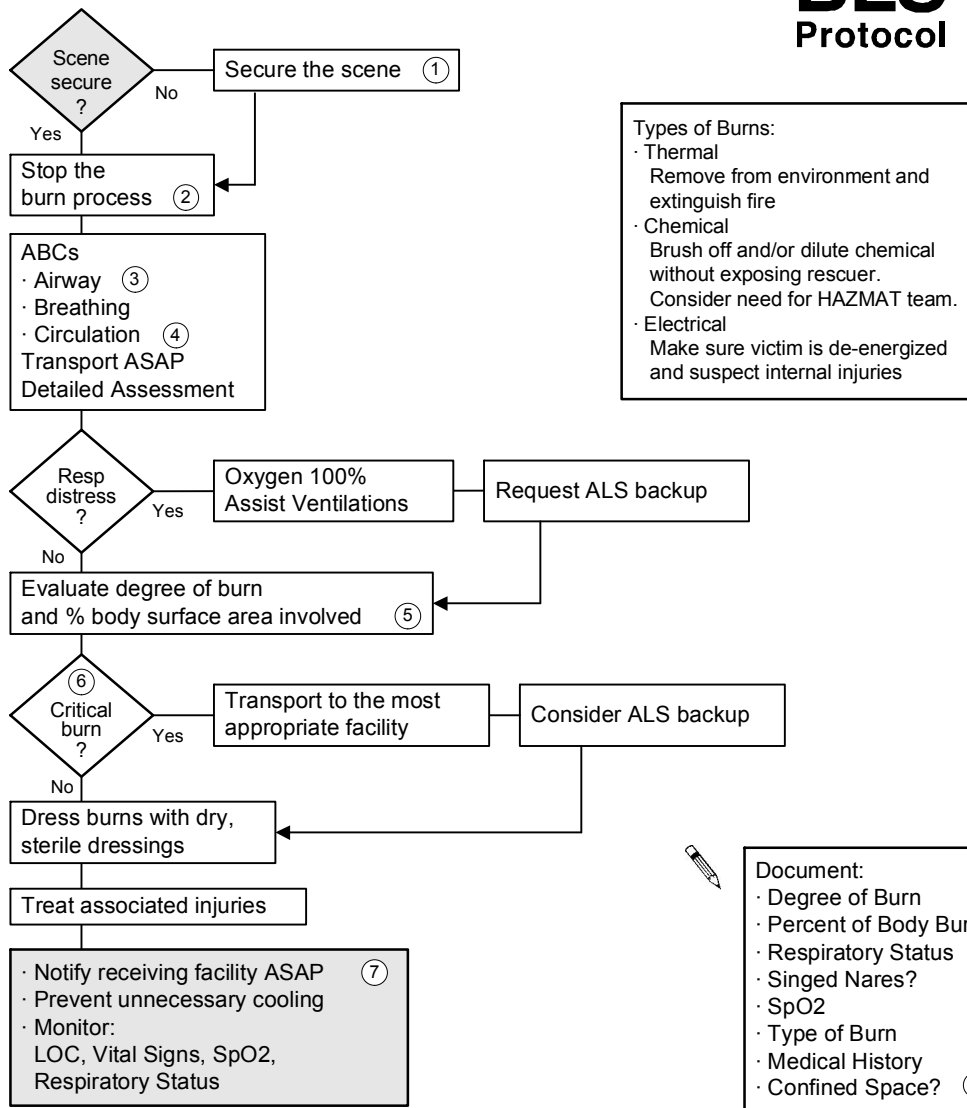


Burns

BLS Protocol



Types of Burns:

- Thermal
Remove from environment and extinguish fire
- Chemical
Brush off and/or dilute chemical without exposing rescuer.
Consider need for HAZMAT team.
- Electrical
Make sure victim is de-energized and suspect internal injuries

Document:

- Degree of Burn
- Percent of Body Burned
- Respiratory Status
- Singed Nares?
- SpO2
- Type of Burn
- Medical History
- Confined Space? 3

- 1 Make sure rescuers can safely help the victim.
- 2 Remove clothes, flood with water ONLY if flames or smoldering is present.
- 3 Consider Carbon Monoxide poisoning if victim was within a confined space. If potential for CO poisoning exists administer Oxygen 100%.
- 4 If shock is present consider underlying causes. Request ALS backup.
- 5 Note: the patient's palm represents 1% of their BSA. Use this as a reference.
- 6 Critical burn = · any degree 25% BSA · 3rd degree > 10% · respiratory injury · involvement of face, hands, feet, or genitalia · circumferential burns · associated injuries · electrical or deep chemical burns · underlying medical history (cardiac, diabetes) · age < 10 or > 50 years.
- 7 Contact Medical Control if you have any questions or if complications develop.