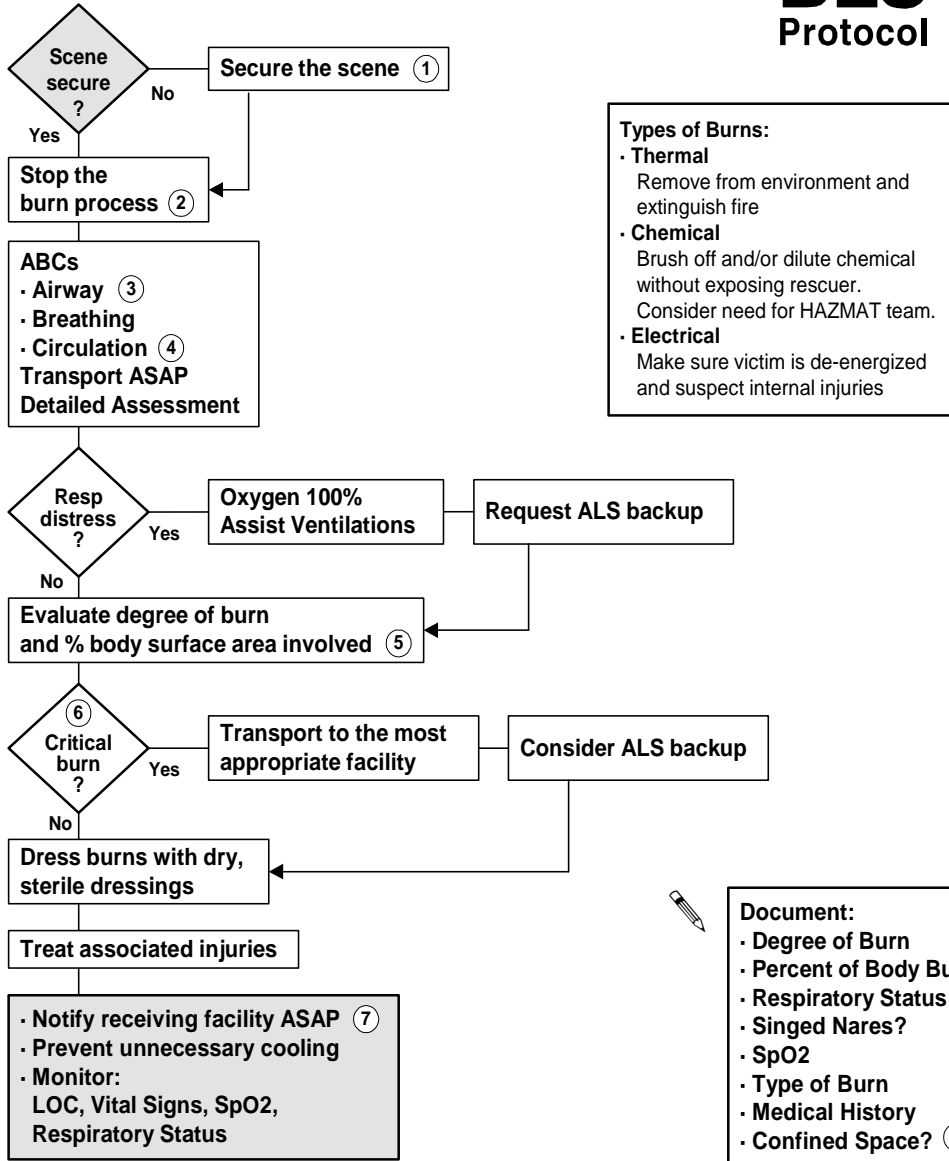


# Burns

# BLS Protocol



**Types of Burns:**

- **Thermal**  
Remove from environment and extinguish fire
- **Chemical**  
Brush off and/or dilute chemical without exposing rescuer. Consider need for HAZMAT team.
- **Electrical**  
Make sure victim is de-energized and suspect internal injuries

**Document:**

- Degree of Burn
- Percent of Body Burned
- Respiratory Status
- Singed Nares?
- SpO2
- Type of Burn
- Medical History
- Confined Space? (3)

- 1 Make sure rescuers can safely help the victim.
- 2 Remove clothes, flood with water ONLY if flames or smoldering is present.
- 3 Consider **Carbon Monoxide** poisoning if victim was within a confined space. If potential for CO poisoning exists administer **Oxygen** 100%.
- 4 If shock is present consider underlying causes. **Request ALS backup.**
- 5 Note: the patient's palm represents 1% of their BSA. Use this as a reference.
- 6 **Critical burn =** • any degree 25% BSA • 3rd degree > 10% • respiratory injury • involvement of face, hands, feet, or genitalia • circumferential burns • associated injuries • electrical or deep chemical burns • underlying medical history (cardiac, diabetes) • age < 10 or > 50 years.
- 7 Contact Medical Control if you have any questions or if complications develop.

ECEMS  
Effective 1/2006

©2001-2006 Copyrighted East Cascade Emergency Medical Services Council

BURNS