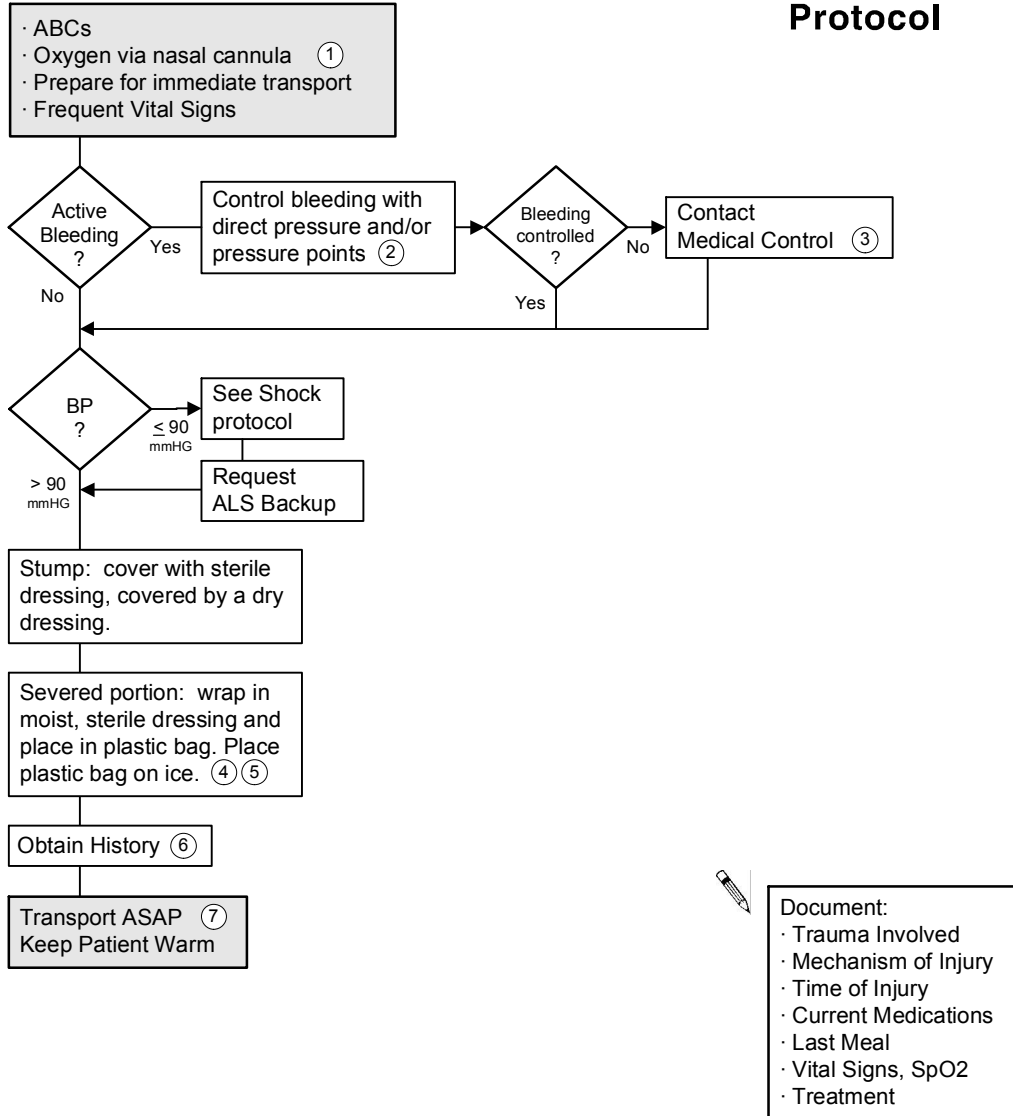


Amputation

BLS Protocol



- 1 Administer higher concentrations if needed.
- 2 Use pressure point proximal to site if direct pressure does not control the bleeding.
- 3 Request ALS or ILS Backup. A tourniquet may be indicated.
- 4 Keep severed part moist. Do not allow to soak in a solution.
- 5 If transport is delayed or otherwise extensive (entrapped patient, etc.), consider air transport and/or transporting severed part before patient, to allow early examination and surgical preparation for reimplantation.
- 6 History: note time of amputation, mechanism involved, current medications, bleeding disorders. Exam: note anatomical location of amputation. Estimate total blood loss.
- 7 Do not delay transport at any time in this protocol.

ECEMS, Effective 1/2008
Copyright 2001-2008 East Cascade Emergency Medical Services

AMPUTATION