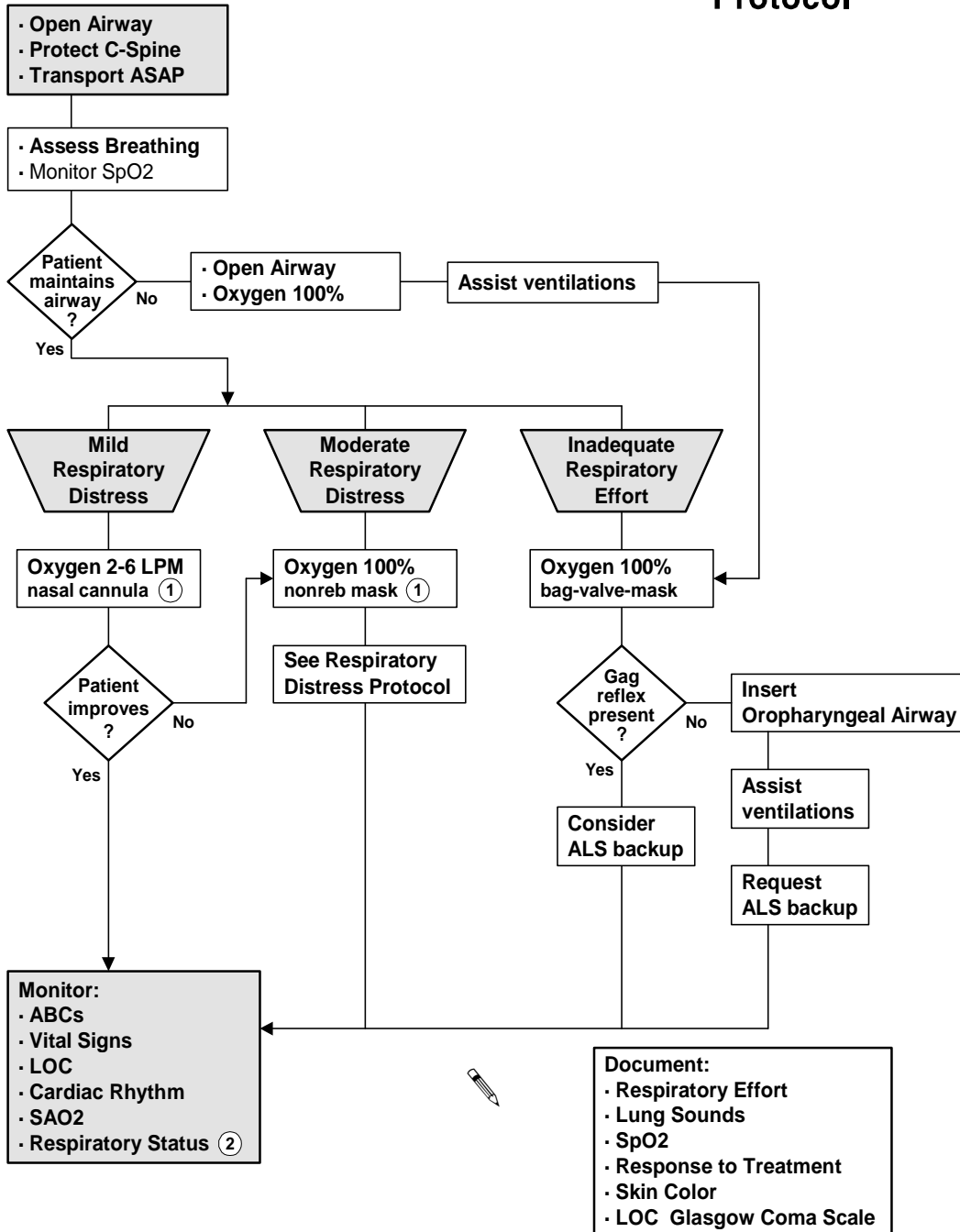


# Airway Management

# BLS Protocol



1 COPD patients often use their Hypoxic Drive. In these cases, expect and accept SpO2 readings <90 & >85%. Lower concentrations of oxygen may be indicated yet never deprive a patient, in respiratory distress, of Oxygen.

2 IF RESPIRATORY EFFORT OR LEVEL OF DISTRESS CHANGES MOVE TO THE APPROPRIATE ASPECT OR ARM OF THIS PROTOCOL.

ECEMS

Effective 1/2006

©2001-2006 Copyrighted East Cascade Emergency Medical Services Council

AIRWAY MANAGEMENT