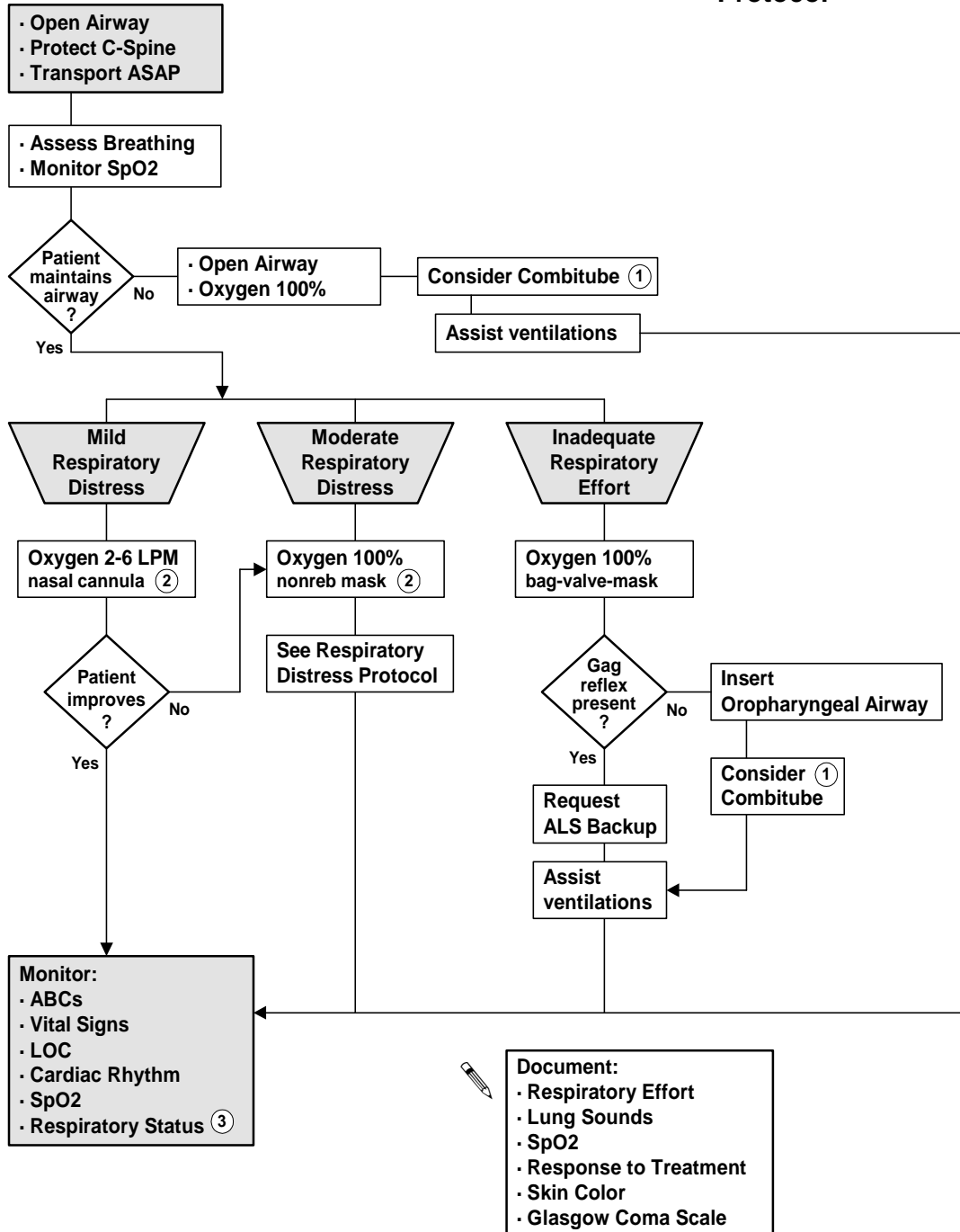


# Airway Management



1 See Combitube Protocols.  
 2 COPD patients often use their Hypoxic Drive. In these cases, expect and accept SpO2 readings <90% & >85%. Lower concentrations of oxygen may be indicated yet never deprive a patient, in respiratory distress, of Oxygen.  
 3 IF RESPIRATORY EFFORT OR LEVEL OF DISTRESS CHANGES MOVE TO THE APPROPRIATE ASPECT OR ARM OF THIS PROTOCOL.