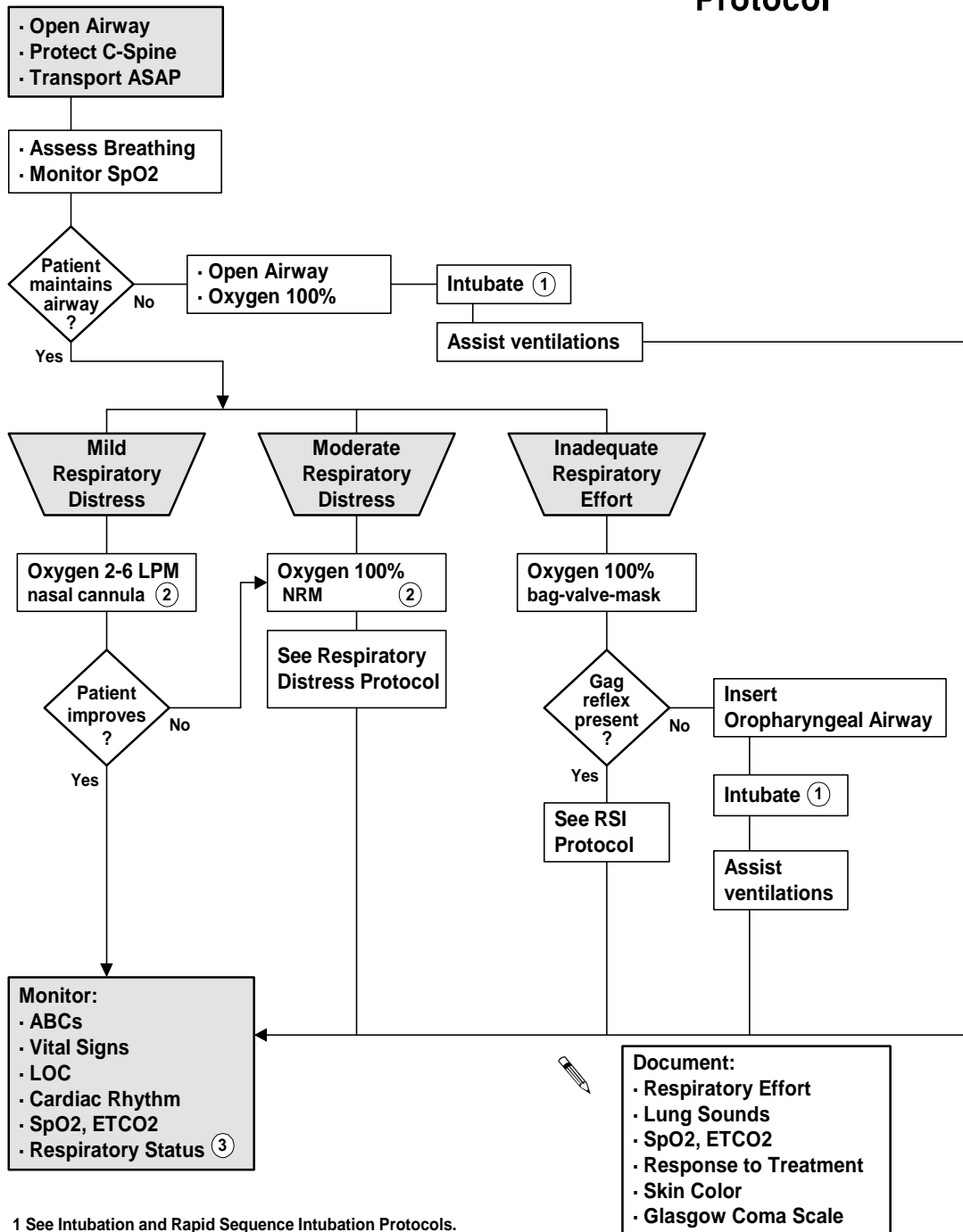


# Airway Management

# ALS Protocol



1 See Intubation and Rapid Sequence Intubation Protocols.

2 COPD patients often use their **Hypoxic Drive**. In these cases, expect and accept SpO2 readings <90% & >85%. Lower concentrations of oxygen may be indicated, yet never deprive a patient in respiratory distress of Oxygen.

3 IF RESPIRATORY EFFORT OR LEVEL OF DISTRESS CHANGES MOVE TO THE APPROPRIATE ASPECT OR ARM OF THIS PROTOCOL.

ECEMS

Effective 1/2006

©2001-2006 Copyrighted East Cascade Emergency Medical Services Council

AIRWAY MANAGEMENT