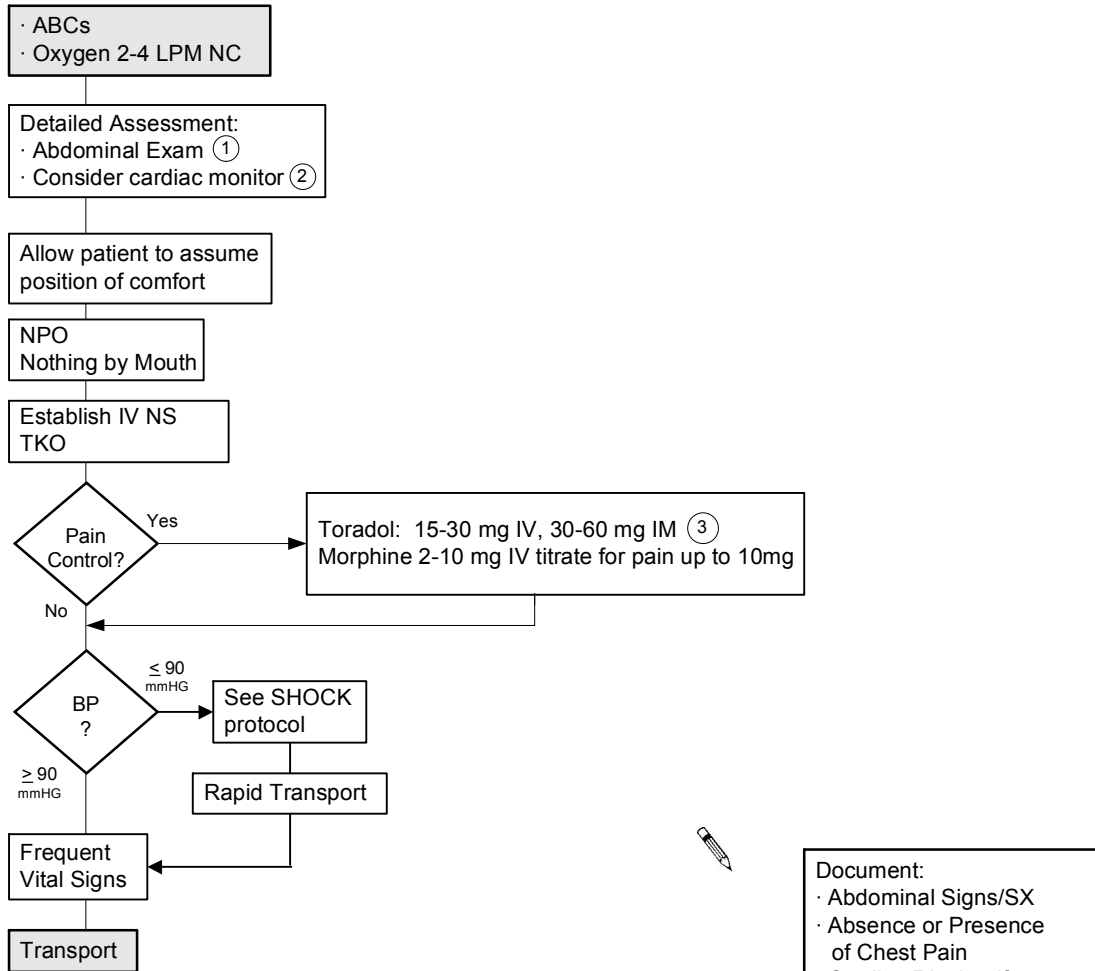


Abdominal Pain:
Not related to pregnancy or trauma

ILS
Protocol



1 Abdominal Exam: Note pain (nature, duration, intensity on 1-10 scale, radiation). Observe for palpable mass, always palpate with care. Auscultate prior to palpation. Note associated signs & symptoms; (nausea, vomiting, bowel tones, guarding, rebound tenderness, distention). History: previous episodes, last meal, current medications, last menstrual period, possibility of pregnancy.

2 Be aware that ischemic cardiac pain can present as abdominal pain especially in older patients.

3 Toradol: Most effective for colic spastic type pain including gall bladder, kidney stones, and general pain control. Use CAUTION with potential bleeding.